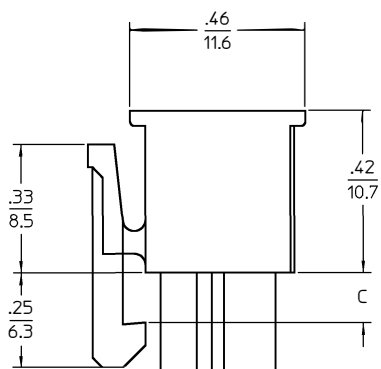
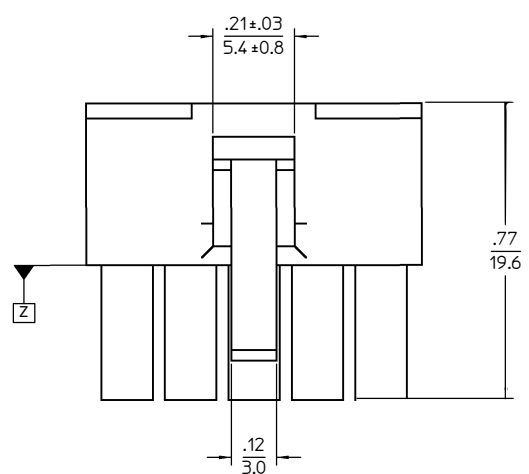
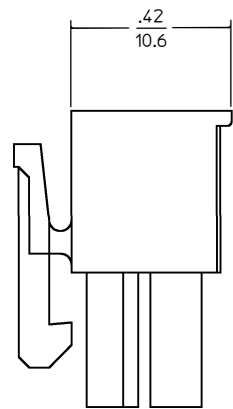


4 CKT SHOWN

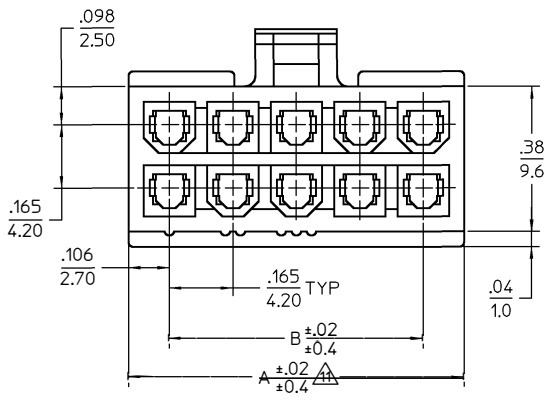
- NOTES:
- MATERIAL:
    - "BLANK" = NYLON 6/6, UNFILLED UL94V-2, COLOR: NATURAL.
    - "BL" = NYLON 6/6, UNFILLED UL94V-2, COLOR: BLACK.
    - "RE" = NYLON 6/6, UNFILLED UL94V-2, COLOR: RED.
    - "YE" = NYLON 6/6, UNFILLED UL94V-2, COLOR: YELLOW
    - "GRE" = NYLON 6/6, UNFILLED UL94V-2, COLOR: GREEN.
    - "210" = NYLON 6/6, UNFILLED UL94V-0, COLOR: NATURAL.
    - "225" = NYLON 6, UNFILLED UL94V-0, COLOR: BLACK, IEC 60335-1, 4th EDITION GLOW WIRE CAPABLE.
    - "400" = NYLON 6/6, UNFILLED UL94V-0, COLOR: BLACK.
  - FINISH: NOT APPLICABLE
  - PRODUCT SPECIFICATION: PS-5556-001
  - PACKAGING: BULK
  - PART MATES WITH MOLEX PLUG #5559 AND HEADERS #5566, #5569.
  - PART TO BE USED WITH MOLEX FEMALE TERMINAL #5556.
  - PART IS NOT DESIGNED FOR CURRENT SHARING.
  - CONNECTORS ARE NOT TO BE MATED OR UNMATED WHILE CIRCUITS ARE LIVE.
  - WIRES ARE TO BE DRESSED IN SUCH A MANNER TO ALLOW THE TERMINALS TO FLOAT FREELY IN THE POCKET.
  - PART CONFORMS TO CLASS "B" REQUIREMENTS OF COSMETIC SPECIFICATION PS-45499-002 WITH THE EXCEPTION OF DISCOLORATION, FLASH AND SINK MEET CLASS "C" REQUIREMENTS.
- ⚠ TO BE MEASURED AT SURFACE Z



4-24 CKT



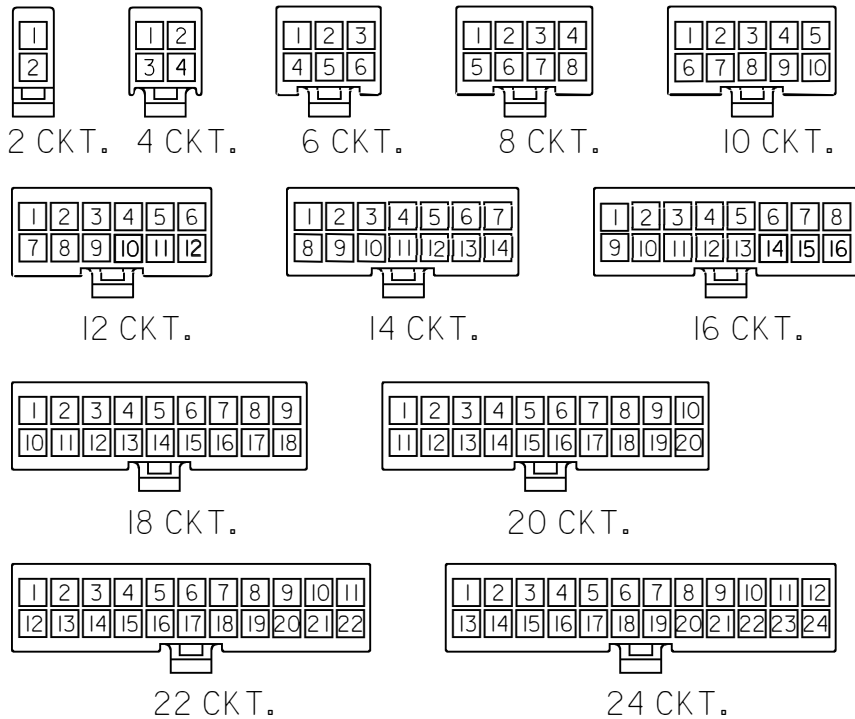
2 CKT ONLY



2.031/(51.60)	1.819/(46.20)	.142/ (3.60)	24
1.866/(47.40)	1.654/(42.00)		22
1.701/(43.20)	1.488/(37.80)	.129/ (3.30)	20
1.535/(39.00)	1.323/(33.60)		18
1.370/(34.80)	1.157/(29.40)	.129/ (3.30)	16
1.205/(30.60)	0.992/(25.20)		14
1.039/(26.40)	0.827/(21.00)	.129/ (3.30)	12
0.874/(22.20)	0.661/(16.80)		10
0.709/(18.00)	0.496/(12.60)	.129/ (3.30)	8
0.543/(13.80)	0.331/(8.40)		6
0.378/(9.60)	0.165/(4.20)	.129/ (3.30)	4
0.213/(5.40)	—		2
A	B	C	NO. OF CKTS.

UPDATE NOTE 1 EC NO: UCP2012-3041 DRWINGUYEN 2012/06/28 CHKD:JBELL 2012/06/28 APPR:FSMITH 2012/07/03	QUALITY SYMBOLS ∇=0 ∇=0 ∇=0	GENERAL TOLERANCES (UNLESS SPECIFIED) DIMENSION STYLE: I N / M M SCALE: 4: M E T R I C DESIGN UNITS: THIRD ANGLE PROJECTION	
		4 PLACES ± .05 3 PLACES ± .05 2 PLACES ± .05 1 PLACE ± .08 ANGULAR ± 3°	
		DRAWN BY: S. MOCHIZUKI DATE: '90/02/22 CHECKED BY: M. FUKUSHIMA DATE: '97/01/08 APPROVED BY: FSMITH DATE: 2011/02/21	
		DRAFT WHERE APPLICABLE MUST REMAIN WITHIN DIMENSIONS SEE CHART MATERIAL NO. SD-5557-003 DOCUMENT NO. SD-5557-003 SHEET NO. 1 OF 2	

THIS DRAWING CONTAINS INFORMATION THAT IS PROPRIETARY TO MOLEX INCORPORATED AND SHOULD NOT BE USED WITHOUT WRITTEN PERMISSION



CIRCUIT SIZE LAYOUT  
(NOT TO SCALE)

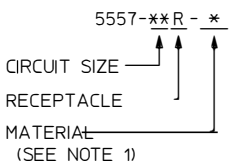
V-0 GLOW WIRE (BLACK)		
50-36-1667	5557-24R-225	24
26-01-3167	5557-22R-225	22
* 26-01-3166	5557-20R-225	20
50-36-1668	5557-18R-225	18
50-36-1669	5557-16R-225	16
50-36-2293	5557-14R-225	14
50-36-1674	5557-12R-225	12
50-36-1671	5557-10R-225	10
50-36-1713	5557-08R-225	8
50-36-1672	5557-06R-225	6
50-30-4461	5557-04R-225	4
50-36-1673	5557-02R-225	2
<b>EDP. NO.</b>	<b>ENG. NO.</b>	<b>NO. OF CKTS.</b>

V-0 (BLACK)			V-0 (NATURAL)		
39-03-9242	5557-24R-400	24	39-01-2245	5557-24R-210	24
39-03-9222	5557-22R-400	22	39-01-2225	5557-22R-210	22
39-03-9202	5557-20R-400	20	39-01-2205	5557-20R-210	20
39-03-9182	5557-18R-400	18	39-01-2185	5557-18R-210	18
39-03-9162	5557-16R-400	16	39-01-2165	5557-16R-210	16
39-03-9142	5557-14R-400	14	39-01-2145	5557-14R-210	14
39-03-9122	5557-12R-400	12	39-01-2125	5557-12R-210	12
39-03-9102	5557-10R-400	10	39-01-2105	5557-10R-210	10
39-03-9082	5557-08R-400	8	39-01-2085	5557-08R-210	8
39-03-9062	5557-06R-400	6	39-01-2065	5557-06R-210	6
39-03-9042	5557-04R-400	4	39-01-2045	5557-04R-210	4
39-03-9022	5557-02R-400	2	39-01-2025	5557-02R-210	2
<b>EDP. NO.</b>	<b>ENG. NO.</b>	<b>NO. OF CKTS.</b>	<b>EDP. NO.</b>	<b>ENG. NO.</b>	<b>NO. OF CKTS.</b>

\* = CONSULT FACTORY FOR AVAILABILITY.

V-2 (GREEN)			V-2 (YELLOW)			V-2 (RED)			V-2 (BLACK)			V-2 (NATURAL)					
		24			24	-	-	24	*	39-01-3245	5557-24R-BL	24	39-01-2240	5557-24R	24		
		22			22	-	-	22		39-01-3225	5557-22R-BL	22	39-01-2220	5557-22R	22		
		20			20	-	-	20	*	39-01-3205	5557-20R-BL	20	39-01-2200	5557-20R	20		
		18			18	-	-	18	*	39-01-3185	5557-18R-BL	18	39-01-2180	5557-18R	18		
		16			16	-	-	16	*	39-01-3165	5557-16R-BL	16	39-01-2160	5557-16R	16		
		14			14	-	-	14		39-01-3145	5557-14R-BL	14	39-01-2140	5557-14R	14		
		12			12	-	-	12		39-01-3125	5557-12R-BL	12	39-01-2120	5557-12R	12		
		10			10	-	-	10		39-01-3105	5557-10R-BL	10	39-01-2100	5557-10R	10		
		8			8	-	-	8		39-01-3085	5557-08R-BL	8	39-01-2080	5557-08R	8		
*	39-02-7069	5557-06R-GRE	6	*	39-02-8061	5557-06R-YE	6	-	-	6	39-01-3065	5557-06R-BL	6	39-01-2060	5557-06R	6	
		4		*	39-02-8041	5557-04R-YE	4	*	39-02-8040	5557-04R-RE	4	39-01-3045	5557-04R-BL	4	39-01-2040	5557-04R	4
*	39-02-7029	5557-02R-GRE	2	*	39-02-8021	5557-02R-YE	2		-	2	39-01-3025	5557-02R-BL	2	39-01-2020	5557-02R	2	
<b>EDP. NO.</b>	<b>ENG. NO.</b>	<b>NO. OF CKTS.</b>	<b>EDP. NO.</b>	<b>ENG. NO.</b>	<b>NO. OF CKTS.</b>	<b>EDP. NO.</b>	<b>ENG. NO.</b>	<b>NO. OF CKTS.</b>	<b>EDP. NO.</b>	<b>ENG. NO.</b>	<b>NO. OF CKTS.</b>	<b>EDP. NO.</b>	<b>ENG. NO.</b>	<b>NO. OF CKTS.</b>			

LEGEND



SEE SHEET 1  
EC NO: UCP2012-3041  
2012/06/28  
DRAWN BY: DRWINHNGUYEN  
2012/06/28  
CHKD: JBELL  
2012/07/03  
APPR: FSMITH

QUALITY SYMBOLS  
▽=O  
▽=O  
▽=O

GENERAL TOLERANCES (UNLESS SPECIFIED)  
mm INCH  
4 PLACES ± .01 ± .0008  
3 PLACES ± .01 ± .0013  
2 PLACES ± .02 ± .0025  
1 PLACE ± .03 ± .0038

ANGULAR ± 3°

DRAFT WHERE APPLICABLE MUST REMAIN WITHIN DIMENSIONS

DIMENSION STYLE: IN/MM

SCALE: METRIC

DESIGN UNITS: METRIC

THIRD ANGLE PROJECTION

DRAWN BY: S. MOCHIZUKI DATE: '90/02/22

CHECKED BY: M. FUKUSHIMA DATE: '97/01/08

APPROVED BY: FSMITH DATE: 2011/02/21

MATERIAL NO. SEE CHART

DOCUMENT NO. SD-5557-003

SHEET NO. 2 OF 2

THIS DRAWING CONTAINS INFORMATION THAT IS PROPRIETARY TO MOLEX INCORPORATED AND SHOULD NOT BE USED WITHOUT WRITTEN PERMISSION