

HD-CONVERTER



A.u.S. Spielgeräte GesmbH
Scheydgasse 48 A-1210 Wien
Tel. +43-1-271 66 00 Fax.+43-1-271 66 00 75
E-mail: verkauf@aus.at
<http://www.aus.at>
Öffnungszeiten: Mo-Fr. 9-18 Uhr

USER MANUAL

CGA/EGA/YUV TO VGA CONVERTER

VERSION 3.0

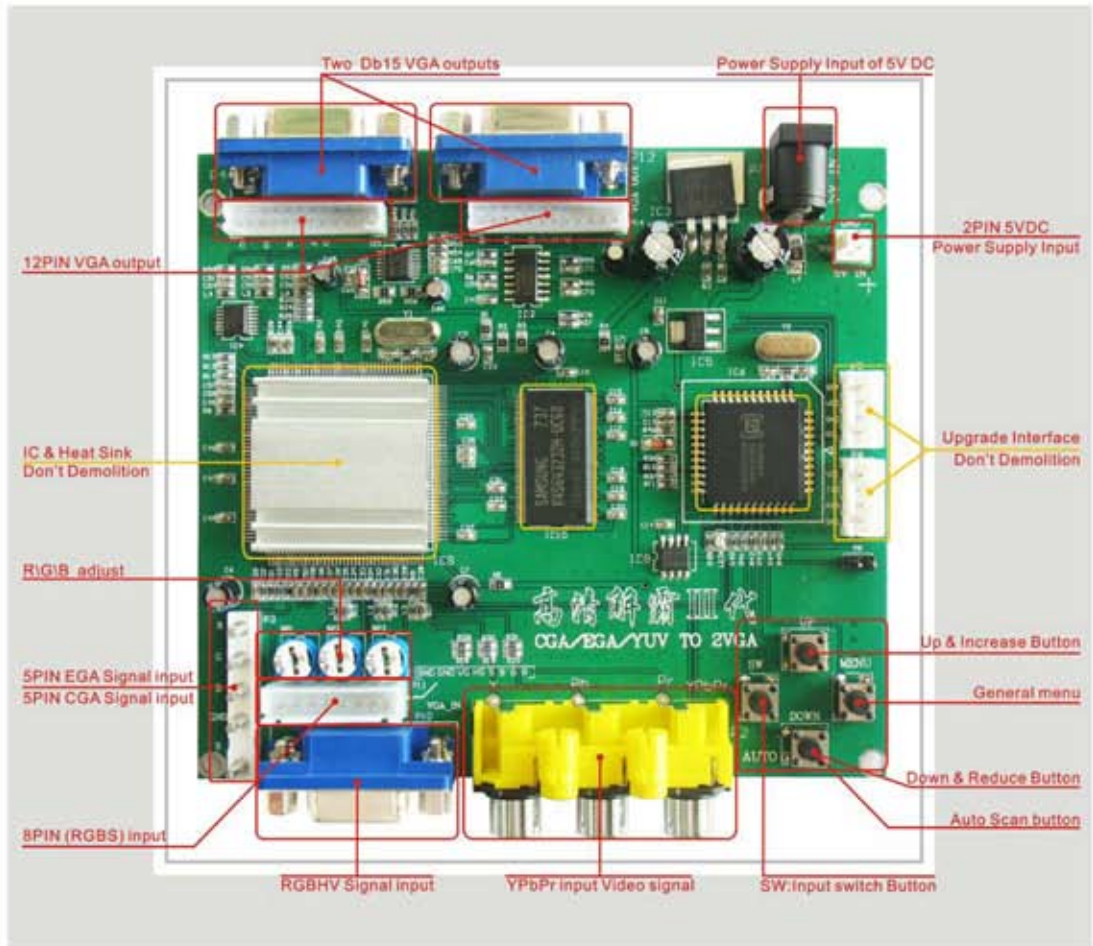
2008-11

NOTE

The high definition converter GBS-8220 it's professional of game convert. Support all games (Amusement、Playstation、Xbox、wii.....)convert to CRT monitor 、LCD monitor 、PDP monitor..... Auto scan CGA/EGA/YUV signal, Two VGA outputs , output high resolution signal.

FEATURES

- Supports CGA/EGA/YUV signal input.
- Supports VGA output 640*480,800*600,1024*768,1360*768
- CGA/EGA signal auto scan(15K,24K,31K)
- YUV signal auto scan(480i,576i,720i,1080i,480p,576p,720p,1080p)
- Chinese and English OSD.
- Supports position control & zoom control.
- True digital 24-bit A/D converter for true 16.7-million color conversion.
- Supports all VGA monitor (CRT、LCD、PDP、PROJECT.....)



SPECIFICATIONS

Power	DC5V 2A +/- 0.5v		P7 or P9
Input signal	CGA/EGA	14.5-16.5K	Auto scan P3 or P11 or P10
		23.5-25.5K	
		30.5-32.5K	
	VGA	30.5-32.5K	Auto scan P10 or P11
		30.5-32.5K	
		30.5-32.5K	
Ypbpr	480p,576p,720p,1080p	Auto scan P2	
	Ycber		480i,576i,720i,1080i
Output signal	VGA	640*480,800*600 1024*768,1360*768	P4 and P13
User control	Input Switch, Image Zoom, Image Position, Output Resolution ,R\G\B gain adjust.		Menu Key R\G\B VR
Dimensions	115*105*20mm		



MENU CONTROL

- "MENU" open OSD menu, and enter.
- "UP" up and increase.
- "DOWN/AUTO" down and reduce.
Press this key auto scan CGA/EGA signal
Press this key over 5 second and release reset system
** (this operation is invalid when you open OSD menu)
- "SW" switch input signal Ypbpr/RGBS/RGBHV.
** (this operation is invalid when you open OSD menu)
- "Clamp sp" & "Clamp" please don't adjust this button, excepting the monitor have black item, or picture discoloration.
- More functions control please look to OSD to operation.

FAQ

No signal on you monitor

- please check input and output cable, make sure all cable it's connected. And make sure power it's on. Display on you monitor it's "No signal" please press "SW" to switch input signal.

Input not supports

- when you monitor display "input not supports" maybe you need change to low resolution .
Please press "DOWN/AUTO" over 5 second and release. system reset to 800*600 output.

Image not full on you screen

- please enter menu adjust image position and zoom.

Image shake or freeze

- please press "DOWN/AUTO", system auto scan input signal and restore image.

Have black item on screen, or all screen it's too black, or picture discoloration.

- please adjust "Clamp sp" and "Clamp st", please keep "Clamp st" less than "Clamp sp".
-advice "Clamp st" SET "03", "Clamp sp" SET "04".

Image color not right

- please adjust R\G\B VR.