

CATCH'EM ALL, HOOK, LINE AND SINKER!



Williams 

Williams Electronics Games, Inc.

A subsidiary of
WME
Industries, Inc.

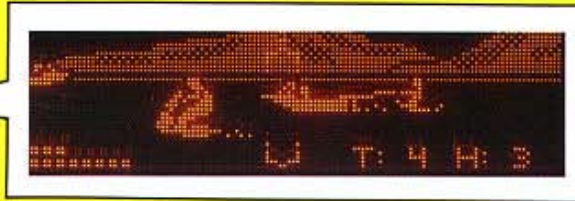
3401 N. California Ave.
Chicago, IL 60618
312-267-2240, Fax 312-267-8435



Proudly
Supporting
America's Best

FISH TALES™

VIDEO MODE Just when you thought it was safe to go back in the water . . . Video Mode allows players to torpedo speeding boats and watercraft in an overcrowded lake.



STRETCH THE TRUTH Catching a fish at the left or right target banks lights "Stretch the Truth" lamps for a chance to multiply fish values up to five times (5X) actual score.



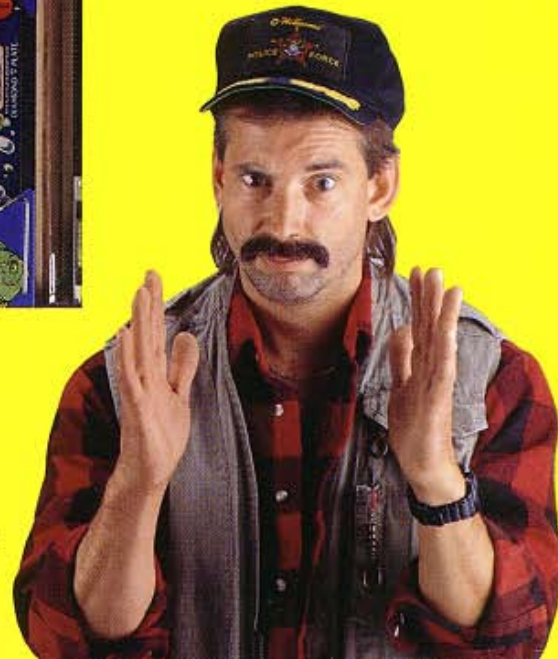
ROD AND REEL Shots to the Caster's Club locks balls in the Fishing Reel. Three balls locked starts Multi-Ball® play. One more shot to the Caster's Club starts Jackpot Mode.



BOAT Making Port and Starboard boat shots lights "Monster Fish" bonus (Hurry-up). The Captive Ball in the center of the boat is advanced by making Long Cast loops. Score lit value by hitting the Captive Ball; values are Hold Bonus, Lite Video Mode, Rock Boat, Lite Extra Ball, and Instant Multi-Ball®.

FEATURING **NEW**

- OPTO-FLIPPER BUTTON SWITCH
- COMPUTER-STYLE ELECTRICAL LINE CORD SETS



Williams 
Williams Electronics Games, Inc.

A subsidiary of
WME
Industries Inc.

NOTICE: "FISH TALES" is a trademark of Williams Electronics Games, Inc. © 1992 Williams Electronics Games, Inc. All rights reserved.

 A.U.S. Spielgeräte GmbH
Scheydgasse 48 A-1210 Wien
Tel. +43-1-271 66 00 Fax +43-1-271 66 00 75
E-mail: verkauf@aust.at
<http://www.aust.at> <http://www.garlando.at>
Öffnungszeiten: Mo-Do 9-18 und Fr. 9-17 Uhr